

For more information go to www.barbourproductsearch.info



Stainless steel tubular balusters

Quality you can hold on to.

Sapphire Eastern Park Farm Lane Nuthampstead Herts SG8 8LZ
call 01763 847 020 fax 01763 847 030 email sales@sapphireeastern.com

Sapphire Midlands 10 Thorpe Way Banbury OX16 4SP
call 01295 265 500 fax 01295 265 040 email sales@sapphiremidlands.com

Sapphire Scotland 1 Blackhouse Circle Peterhead AB42 1BN
call 01779 476 089 fax 01779 471 796 email sales@sapphireScotland.co.uk

Sapphire Southern 11 Arkwright Road Reading RG2 0LU
call 0118 986 5410 fax 0118 986 5420 email sales@sapphiresouthern.com

www.sapphirebalustrades.com

 **SAPPHIRE™**
balustrades

Onyx

Versatility and resilience

Onyx, our stainless steel range, offers a great-looking, low-maintenance solution that's ideal for communal areas in retail, commercial, residential, education and leisure settings.

Onyx is available in three variants. Onyx 304 uses a satin-polished interior grade 304 stainless steel, for a highly practical, low-maintenance system. Onyx 316's smooth satin-polished external grade 316 stainless steel can be specified for exterior use. An optional polyester coating can be applied to prevent it being cold to the touch. Onyx can also be used in bright mirror-polished marine-grade 316 stainless steel, ideally suited to marine and pool environments.

Onyx can be enhanced with hardwood handrails to give a softer, warmer effect (see page 106). For a more economic but still realistic option, choose our wood-effect coating (see page 108).

Onyx can be infilled with horizontal midrails, straining wires, midrails with glass, vertical midrails, glass panels or steel panels.



 > product credentials



Seamless finish for completely smooth bends

Hidden fixings for a sharp, clean look

Far more stylish and prestigious than painted or coated balustrades

Balusters available in stainless steel and brass

Handrails available in stainless steel, brass, hardwood and wood-effect

Continuous, flowing handrails and balustrade top rails with no finger traps

profiles

42mm dia. tubular
50mm dia. tubular

material type

304 grade stainless steel (internal)
316 grade stainless steel (external)
Brass

finishes

Satin polished
Bright polished

[More in-depth technical information is available in the Onyx technical brochure.](#)

Inspired > Bracknell

Commercial

This modern office complex needed a handrail solution to complement the high-specification accommodation offered. For the exterior handrails on walkways and staircases, we supplied stainless steel Onyx handrails with matching uprights. The finished effect is elegant and practical while also offering superior durability. The client chose an oval profile for the handrails.

Architect

Collett & Farmer Architects

Contractor

Wates Interiors



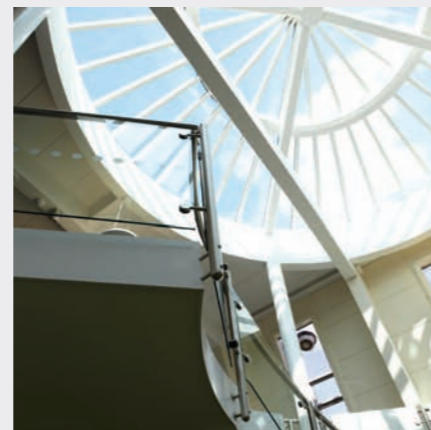
Saffron Walden Library

Community



Onyx is an ideal choice for community projects where clients need a hard-wearing and cost-effective solution without compromising on visual aesthetics. This project comprised a spiral Onyx balustrade on the stairs and a curved balustrade from the same range in the atrium, completed with manifested glass displaying the county emblem of Essex. The client chose to value-engineer the project using faceted glass instead of curved glass.

Architect
Acanthus Clews
Contractor
TJ Evers



Cabot Circus > Bristol

Retail

This high-profile retail commission required a spiral Onyx balustrade for a curved staircase, featuring an extra-large diameter baluster and LEDs installed within the handrail.

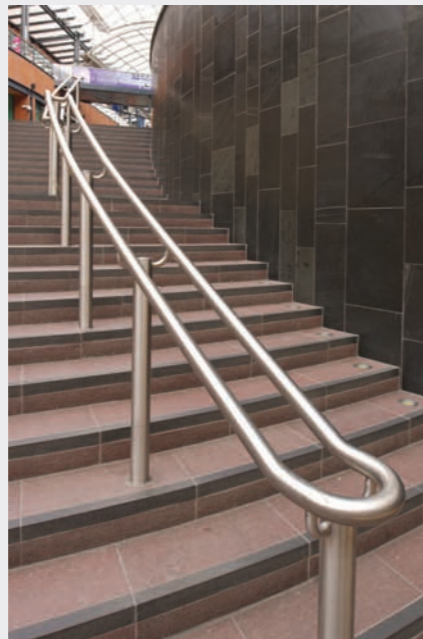
The finished space combines walkways and seating areas safely and practically, with a clean yet resilient finish.

Architect

Benoy

Contractor

Sir Robert McAlpine



Square One > Heathrow

Commercial

Square One is an office park comprising four self-contained buildings offering high-quality accommodation. We provided Onyx balustrades to external ramps, a main staircase and an entrance atrium.

Architect
George Harwood Architects
Contractor
Ashe Construction

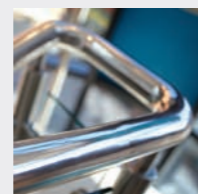


Primark > Cambridge

Retail

For its high-profile Cambridge store, Primark specified Onyx balustrades to the customer staircase, escalator void and gates leading to window display areas. The installation is notable for the D-shaped lugs used in place of 'banjos'.

Architect
3D Architects
Contractor
ISG Retail & Leisure



New Look > Bristol

Retail



Clothes retailer New Look opted for a curved Crystal balustrade in their atrium, a Crystal balustrade with stainless steel handrail on the steps and staircase and an Onyx handrail fixed to the walls of a second staircase. Mirror-polished Onyx handrails were used throughout. We also manufactured the stairs.

Architect
Integer 1
Contractor
W Braithwaite



Balustrade enhancements > overview



Armourex

> Advanced coating

Armourex is a uniquely formulated coating offering enhanced performance and extended life. The coating was developed around three core needs:

Anti-graffiti > Graffiti is easy to remove without solvents. Armourex is also flame-resistant.

Antibacterial > Contains an active agent to inhibit growth and reduce spread of bacteria.

Scratch resistant > With a 118 Buchholz hardness, a Clemen hardness of 3500 and a thermal conductivity of 0.3, the coating offers great scratch resistance and a 'warm to the touch' feel.



Natura

> Hardwood handrails

Natura hardwood handrails provide a soft natural complement to components and balustrades from our other ranges. Combine it with stainless steel or glass for a contemporary, warm and welcoming feel.

Our unique high-strength jointing methods mean no core rail is required, dramatically improving the aesthetic impact of the range and enabling smooth, flowing corners and bends – just as with our core ranges. Natura fixings are hidden from view where possible.



Naturex

> Woodgrain coating

Naturex is a highly realistic woodgrain coating, available as an alternative to powder coating. The coating can be made to match any species of timber.

Naturex is suitable for both internal and external situations, offering the same look as timber but with superior durability (25-year lifespan) and no need for regular maintenance. A wide choice of grains and colours can be chosen, all of which deliver further cost savings. Naturex can be applied to both balusters and handrails.



Lunalite

> LED

LED lighting embedded into the underside of the handrail can be used to illuminate walkways for safety or just to create a stunning visual effect.

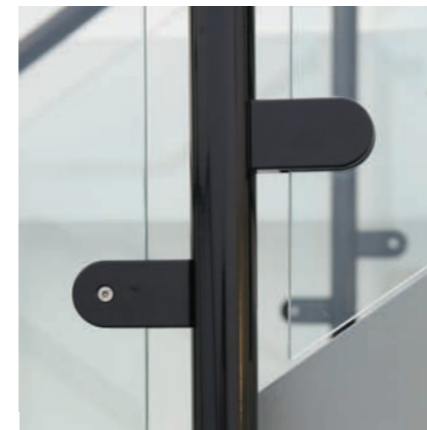
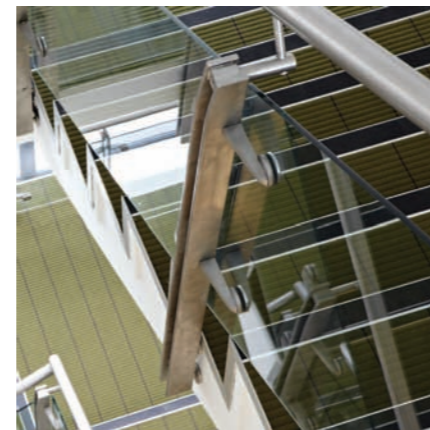
LEDs are available in white, red, blue, green, yellow, purple or constantly changing colours.



Gates

We offer lockable gates in stainless steel, glass and other materials to match our balustrades. Gates provide useful access control in retail, hospitality and other environments, while preserving visual continuity. One-way access gates can also be provided.

Balustrade systems > overview



Crystal

Light, space and style

Crystal is ideal for large atria and other high-profile applications, with a design that's been refined through years of careful development. Its structural glass panels provide a perfectly clear view and an understated lightness that ideally complements both modern and classic buildings.

> [Frameless structural glass](#)

Onyx

Versatility and resilience

Onyx, our stainless steel range, offers a great-looking, low-maintenance solution that's ideal for communal areas in retail, commercial, residential, education and leisure settings.

> [Stainless steel tubular balusters](#)

Jasper

Elegance and creative scope

Jasper is a recently introduced flat-baluster system with slim, contemporary sightlines. It works equally well in both level and raking situations. The range can easily incorporate customised baluster profiles.

> [Profiled flat balusters](#)

Opal

Value and quality

Opal's attractive, head-wearing polyester powder-coated finish delivers a superb balance of durability, quality and value, providing a visual complement or contrast in any environment.

> [Coated tubular balusters](#)

Aluma

Strength and simplicity

Aluma is a cost-effective aluminium balustrade system with a crisp, contemporary flavour. It takes its visual style from a range of aluminium extrusions in various shapes, sizes, finishes and colours. Handrails are joined with hidden fixings to give a perfectly clean line and uncluttered appearance.

> [Aluminium section balusters](#)

For more information go to www.barbourproductsearch.info

Contact
Sapphire



Sapphire Eastern Park Farm Lane Nuthampstead Herts SG8 8LZ
call 01763 847 020 fax 01763 847 030 email sales@sapphireeastern.com

Sapphire Midlands 10 Thorpe Way Banbury OX16 4SP
call 01295 265 500 fax 01295 265 040 email sales@sapphiremidlands.com

Sapphire Scotland 1 Blackhouse Circle Peterhead AB42 1BN
call 01779 476 089 fax 01779 471 796 email sales@sapphirescotland.co.uk

Sapphire Southern 11 Arkwright Road Reading RG2 0LU
call 0118 986 5410 fax 0118 986 5420 email sales@sapphiresouthern.com

www.sapphirebalustrades.com

22 Sapphire Balustrades Contact Sapphire

Sapphire reserve the right to alter specification and designs without prior notice.

© All rights reserved, no part of this publication may be reproduced in any material form (including photocopying or storing it in any medium by electronic means and whether or not transiently, or incidentally to some other use of this publication) without the written permission of the copyright owner. Application for the copyright owner's permission to reproduce any part of this publication should be addressed to Sapphire.

MD3101115

Designed and produced by Aura: www.studioaura.com

ACP4472/01.11